

SAN FRANCISCO BAY MASTER MARINERS BENEVOLENT ASSOCIATION

Master Mariners Regatta Sailing Instructions

Race Day: Saturday, May 23, 2009

1.0 RULES

1.1 This regatta will be governed by:

- 1.1.1 The Racing Rules of Sailing, 2009 - 2012 (RRS) as adopted by the United States Sailing Association.
- 1.1.2 The Standing Sailing Instructions of the Yacht Racing Association of San Francisco Bay (SSI - YRA), effective January 1, 2009.
- 1.1.3 And these Master Mariners Regatta Sailing Instructions (MMRSI)

1.2 Eligibility & Entry

- 1.2.1 This regatta is open to eligible yachts owned or chartered by members in good standing of the Master Mariners Benevolent Association (MMBA).
- 1.2.2 And yachts of traditional design and construction that meet the requirements of the MMBA from recognized Yacht Clubs or Yacht Associations located more than 200 nautical miles from the San Francisco Bay Area.
- 1.2.3 Absolutely no entry forms shall be accepted after May 4, 2008.

1.3 Display of Flag(s) and Advertising – The following changes RRS 55.

- 1.3.1 Each yacht shall display at least one flag. The flag may be your sponsors flag, the MMBA race flag, the MMBA burgee, the MMBA jack, the flag of the United States, or the yacht ensign of the United States. Failure to display a flag will result in a one (1) minute penalty being assessed to the yacht's finishing time.
- 1.3.2 This changes RRS-rule 79, No advertising shall be displayed on yachts participating in this regatta except advertising for the yacht's official MMBA Regatta Sponsor.

1.4 Yacht Identification – RRS 77 is replaced by the following:

- 1.4.1 All yachts shall display racing numbers (or letters) that shall be at least 18-inches high, or conforming to RRS rules Appendix G - G1.2. They can be carried on your mainsail, or on a board or cloth fastened to either lifelines or shrouds.
- 1.4.2 Highly visible contrasting colors shall be used.
- 1.4.3 The numbers must be visible on both sides of the yacht while crossing the start and finish lines.
- 1.4.4 All yachts that have not indicated a racing number on their regatta application have been assigned a number, as indicated in their regatta acceptance letter, which must be displayed in accordance with the rules of section 1.4.

1.5 On the Water Communication – This modifies YRA 20.0

- 1.5.1 The Race committee will conduct Race Communications and monitor Channel 72.

1.6 Retiring -A yacht that retires from the race is requested to notify the Race Committee on Channel 72.

2.0 Notices to Competitors

- 2.1 Will be mailed out to competitors by May 16th.
- 2.2 An unofficial copy of the MMRSI can be obtained from the MMBA web site www.mastermariners.org

3.0 Changes to the Sailing Instructions

- 3.1 There will be no changes to the MMRSI after May 16th.
- 3.2 Description of Marks and Assigned Courses for each class are described in Attachment #1
 - 3.2.1 Yachts will be assigned to one of the MMR classes described in Attachment #3
 - 3.2.2 A MMR class with less than 5 entrants may be combined with another MMR class at the discretion of the Race Chairman
 - 3.2.3 Notice of combining of classes will be made before May 16th.
 - 3.2.4 This changes RRS-rule 32: Courses will not be shortened after the Start.

4.0 Schedule of Races

- 4.1 The Class Assignment and Start Time of each yacht are described in Attachment #4.
 - 4.1.1 Number of Races, this is a single race regatta.

5.0 Racing Area - The Racing Area is shown in Attachment #1a

- 5.1 The marks of this regatta are permanent marks of the San Francisco Bay or the YRA with the exceptions of "15", the mark designating Yellow Bluff, and the mark designating the end of the finish line.
- 5.2 The descriptions of the course marks are described in Attachment #1.
- 5.3 This changes RRS-rule 33: There is no provision for changes to the position of the marks in these instructions.

6.0 Racing

- 6.1 Sailing A Proper Course
 - 6.1.1 Per RRS rule 28.1 A yacht shall sail the course so as to round or pass each mark on the required side in the correct sequence, and so that a string representing her wake, from the time she starts until she finishes, would, when drawn taut, lie on the required side of each mark, touching each rounding mark.
- 6.2 Restricted Areas
 - 6.2.1 For the purposes of RRS rules 18, 19, and 28 the following are considered obstructions per rule 18.5; and shall be considered restricted areas, as if a point of land extended from the shore to the buoy or piling. This precludes passing between the shore and the obstruction marked.
 - 6.2.1.1 The area between the shore and Anita Rock buoy,
 - 6.2.1.2 The vertical "H" beam off the Water Quality Control Plant West of St. Francis Yacht Club,
 - 6.2.1.3 The bell buoy off the West end of Alcatraz,
 - 6.2.1.4 The Point Blunt buoy off Angel Island
- 6.3 Touching A Mark - RRS rule 31 shall apply
 - 6.3.1 While racing, a yacht shall not touch a starting mark before starting, a mark that begins, rounds, or ends a leg of the course on which she is sailing, or a finishing mark after finishing. (RRS - Rule 31.1)
 - 6.3.2 A yacht that has broken rule 6.3.1 may, after getting well clear of other boats, exonerate the infraction by taking a MMR penalty turn before reaching the next mark of the course.
 - 6.3.3 When a yacht touches a finishing mark, she may complete the penalty turn on either side of the finish line, but must return completely to the course side of the finish line before finishing.

Definition: A Master Mariners Regatta penalty turn shall consist of a 360° turn in the same direction that includes one tack and one gibe.

6.4 Penalties For Breaking Rules Of Part 2 Of The RRS

- 6.4.1 This changes RRS rule 44.1: A yacht that may have broken a rule of Part 2 of the RRS and no contact between yachts has been made may exonerate the penalty by taking a MMR penalty turn before reaching the next mark.

Definition: A Master Mariners Regatta penalty turn shall consist of a 360° turn in the same direction that includes one tack and one gibe.

6.5 Protests – This section replaces YRA 17.

6.5.1 This changes RRS rule 60.1: All yachts regardless of size shall inform the protested yacht by hailing immediately and then by the display of a red flag as soon as possible after the incident.

6.5.2 This changes RRS rule 61.3: A protesting yacht is required to notify the Race Committee of her intention to protest at the time she finishes. The Race Committee can be contacted on Channel 72.

6.5.3 And, protests shall be submitted in writing on official forms available in the RRS or on an MMBA protest form available at the MMBA T Shirt table on the EYC lawn. Protest forms shall be submitted at the T Shirt Table prior to 1830 PDST on the day of the regatta.

6.6 Time Limit

6.6.1 This changes RRS rules 35 & Appendix A - A4.1: Yachts that do not cross the finish line prior to 1730 PDST hours will be scored "Did Not Finish" (DNF).

6.7 Appeals – This replaces YRA 18.

6.7.1 There is no provision for appealing the judgment of the Protest Committee. Their judgement is final.

7.0 The Start - Attachment #2 describes the Starting Area

7.1 The starting area is defined by an imaginary box formed between Mark A and X and the seawall between the Golden Gate and St. Francis Yacht Clubs

7.2 The starting line will be between Mark X and an orange flag on the Committee Boat anchored to the West of Mark A. Mark A will mark the western end of the starting line. Mark A may or may not, be located exactly on the starting line, but must be left to port.

7.3 Yachts shall pass through the starting line from South to North leaving Mark X to the East and Mark A to the west.

7.4 Yachts shall not cross the starting line except when preparing to start or starting.

7.5 Yachts other than those preparing to start, within 5 minutes of starting, shall remain clear of the starting area.

7.6 This changes RRS rule 26: The races will be started as follows: A five (5) minute starting sequence will be used. After initial warning and preparatory signals, each succeeding group's preparatory period will be initiated by the start for the preceding group and indicated by the hoisting of a red shape.

7.7 Master Mariners Regatta Signaling System.

Warning Signal	Yellow Shape	1 Sound	10 Minutes
Preparatory Signal	Blue Shape	1 Sound	5 Minutes
1 st Starting Signal	Red Shape	1 Sound	0 Minutes
Next Group Start	Red Shape	1 Sound	5 Minute Intervals

7.8 In the MMRSI signaling system, each visual signal shall be lowered one minute before the next visual signal is made.

7.9 Times shall be taken from the visual signals; the failure of the sound signal shall be disregarded.

7.10 Postponement - This changes RRS 27.3 and YRA 11. Due to the very large size of our fleet, every effort will be made to start on time and avoid any postponement. If extreme weather or accident should cause delay, the standard postponement signal will be flown (Pennant AP), after three successive signals (horn or gun). Racers should monitor channel 72 under these circumstances. After such postponement, the starting sequence in 7.7 above will be re-started.

7.11 Late starting – This modifies YRA 9.0. Vessels starting after their designated start time are required to stand-off and give way to vessels that are starting on time.

8.0 Recall - this changes RRS rule 29

8.1 Neither individual nor general recall will be signaled by the Committee Boat.

8.2 Yachts starting prematurely by less than one minute will be penalized 2 minutes in computing their final elapsed time and time to finish. Due to vessel maneuverability concerns, yachts are discouraged from trying to return to the proper side of the starting line within 1 minute of their start.

8.3 Yachts starting prematurely by more than one minute will be disqualified, unless they return and pass through the starting line again, after their designated starting time. The race committee will attempt to notify a yacht starting prematurely by more than one minute via radio communications on Channel 72.

9.0 The Finish - Attachment #2 describes the Finishing Area

- 9.1 The finish line will be an imaginary line between an orange flag displayed on the Committee Boat and a temporary orange yacht club mark. The Committee Boat anchored East of Treasure Island shall be left to the West when finishing.
- 9.2 The Race Committee will look for your racing numbers at the finish, and if not visible, you may be considered DNF.
- 9.3 Yachts shall fill out and turn in your "Finish Time" form at the drop off box located at the T-shirt booth at "Encinal" as soon as you can after docking. Thereby helping the race committee resolve any questions of finish times for each yacht.

10.0 Scoring - This rule changes RRS rule Appendix A4, and YRA 14.

- 10.1 Yachts racing in all classes will be scored against competitors in their respective classes.
- 10.2 For all classes except Ocean 1 and Ocean 2, the yacht finishing first shall be the winner; the yacht finishing second shall be second and so forth until all yachts have finished. Handicaps for yachts are predetermined, except in the Ocean Classes, and have been adjusted to the starting sequence. A yacht finishing ahead of another yacht in her class will have beaten the trailing yacht and all other yachts finishing behind her.
- 10.3 Ocean classes will have handicaps applied at the finish. An Ocean Class Vessel may finish the course ahead of another Ocean Class Vessel only to be scored behind the trailing vessel due to the adjusted handicapping.

11.0 Safety Regulations and Other Requirements

- 11.1 Responsibility to start or continue the race shall be the sole responsibility of the racing yacht.
- 11.2 The Coast Guard Marine Permit requires that competing yachts must comply with U.S. Coast Guard requirements for recreational vessels.
- 11.3 The MMBA strongly suggests the wearing of personal flotation devices and practice of man overboard recovery techniques.
- 11.4 Boats shall not impede the passage of a vessel, which can safely navigate only within a narrow channel or fairway (see US Dept. of Commerce chart 18649 for designated narrow channels and fairways of SF Bay) or fishing or other vessels with restricted ability to maneuver. Boats identified who endanger their own safety, other sail boats, or that of a commercial or government vessel will be subject to protest by a Race Committee (RC) or contestant and face possible disqualification. RRS 60.3 is modified to add (d) to read: A hearing for allegations of the above will be instigated by a protest committee if notified by government, commercial or individual vessel of possible infraction. It shall also extend the time limit under RRS 61.3 to accept the information. A DSQ for a safety violation shall be considered as a disqualification not excludable (DNF).
- 11.5 **MINIMUM EQUIPMENT:** Boats must comply with the United States Coast Guard's requirements for recreational vessels, RRS 1.2.
- 11.6 Notices of other special security precautions and regulation are described in attachment 5 if required.

12.0 PRIZES

- 12.1 Trophies will be awarded to the winners of each of the classes as follows:
First, second and third place trophies will be awarded when there are ten or fewer entrants; a fourth place trophy will be awarded when there are more than ten entrants; and a fifth place trophy will be awarded when there are more than fifteen entrants. Additionally, the following perpetual trophies will be awarded:
 - 12.1.1 The Lyle Galloway Memorial Trophy will be awarded to the yacht with the best elapsed time in the "under 30 feet on deck" group, of any rig.
 - 12.1.2 The Billiken Trophy will be awarded to the Gaff rigged yacht with the best elapsed time "over 30 feet on deck".
 - 12.1.3 The Dead-Eye Trophy will be awarded to the Marconi yacht "over 30 feet on deck" with the best elapsed time, any rig, non-Ocean class.
 - 12.1.4 The Baruna Trophy will be awarded to the Ocean 1 Class yacht "over 40 feet on deck" that is first to finish.
 - 12.1.5 The Aloha Trophy will be awarded to the Marconi 2 division yacht with the best elapsed time.
 - 12.1.6 The Homeward Bound Trophy will be awarded to the Marconi 3 division yacht with the best elapsed time.
 - 12.1.7 The Kermit Parker Memorial Trophy will be awarded to the Gaff 2 division yacht with the best elapsed time.
 - 12.1.8 The Farallon Clipper Trophy will be awarded to the Farallon Clipper that is first to finish.
 - 12.1.9 The J. Everett Hanson Memorial Trophy will be awarded to the Bird Class Sloop that is first to finish.
 - 12.1.10 The L-36 Perpetual Trophy will be awarded to the L-36 Class Sloop that is first to finish.
 - 12.1.11 The Gerry O'Grady Memorial Trophy will be awarded to the Bear Class Sloop that is first to finish.
 - 12.1.12 The Longest Distance Trophy will be awarded to the yacht that travels on her own bottom the furthest to compete in the regatta.

ATTACHMENT 1

**Master Mariners Regatta Sailing
Instructions**

ASSIGNMENT OF COURSES

Course # 1	To be sailed by Class: M4 G3 BEAR Start 12-P 16-P 18-P 24-S Finish	128nm
Course # 2	To be sailed by Class: M1 M2 M3 BIRD L-36 Start 12-P 16-P 18-P SS-S 8-P Finish	15.6 nm
Course # 3	To be sailed by Class: OCEAN (Includes Farallon Clipper) Start 12-P 16-P 18-P 23-P 17-P Finish	17.0 nm
Course # 4 - Alt	To be sailed by Class: BS* G1 G2 Start 12P 15-P 18-P SS-S Finish	14.2 nm

* This changes RRS-rule 28.1: For the "Big Schooner Division: a Big Schooner shall start, leave each mark on the required side in the correct order and finish so that a string representing her wake after starting and until she finishes would, when drawn taut pass each mark on the required side except that hitting a mark with an potato thrown from the Big Schooner will constitute a correct rounding, no matter which side of the mark the Big Schooner is on. Big Schooners shall be allowed to use their engine for 15 minutes during the race.

DESCRIPTION OF MARKS

Start	Between	Orange Flag on Committee Boat and "X". "A" is a limiting buoy and must be left to port
A	St Francis YC	Yellow Sphere "A" Outer buoy
X	Golden Gate YC	Yellow/Blue Sphere "X"
SS	Southampton Shoal	E Int R 6-sec 32ft 6m Bell
8		R "4" FI R 4 sec (1 nm E of Pt. Blunt)
12	Little Harding Rock	G"1" FI G 4sec (1 nm SW Pt. Knox)
15	Yellow Bluff	Temporary Inflatable Marker (.5nm East of Yellow Bluff, Sausalito)
16	Blackaller (Crissy Field)	Yellow Sphere "C" (0.2 nm E Ft. Point)
17	Harding Rock	RG "HR" FI (2+1) R 6 sec (1 nm S Pt. Knox)
18	Blossom Rock	RG "BR" FI G 6 sec Bell (1 nm SE Alcatraz Is)
23		RW "A" Mo (A) (0.5 nm E Quarry Pt)
24		R "6" FI R 4 sec Bell (1 nm E Quarry Pt)
Finish	Between	Committee Boat off the SE side of Treasure Island and the Temporary Inflatable Marker.

For courses go to: www.mastermariners.org and follow the link to the 2009 Regatta

ATTACHMENT 1a

Master Mariners Regatta Sailing Instructions

Course Markers

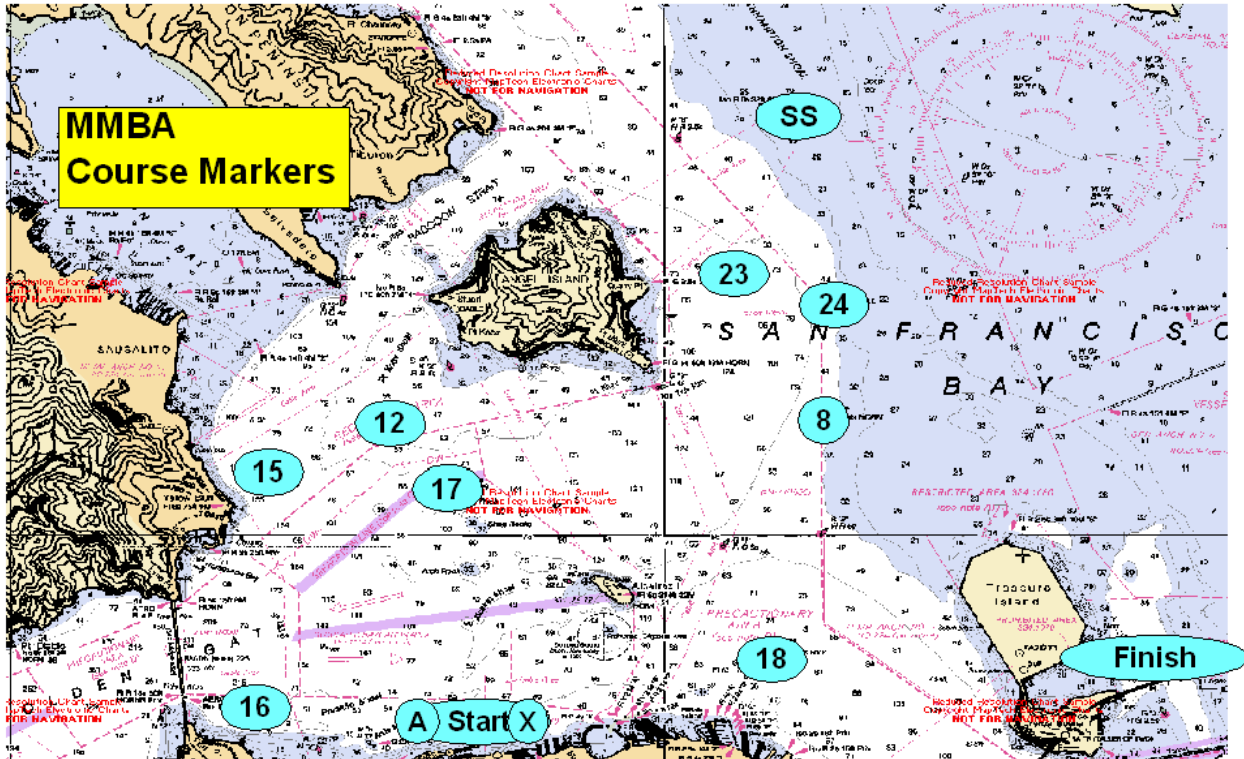
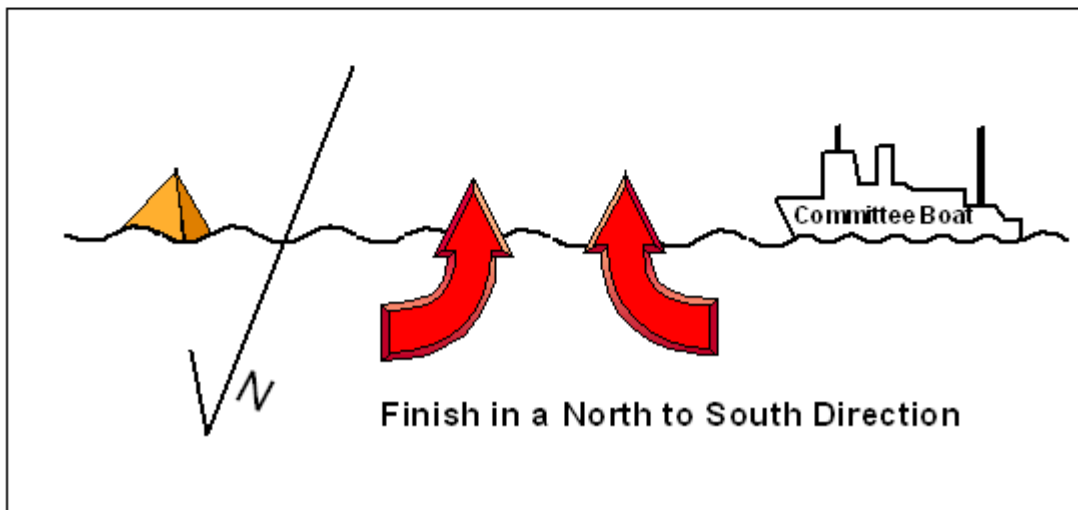
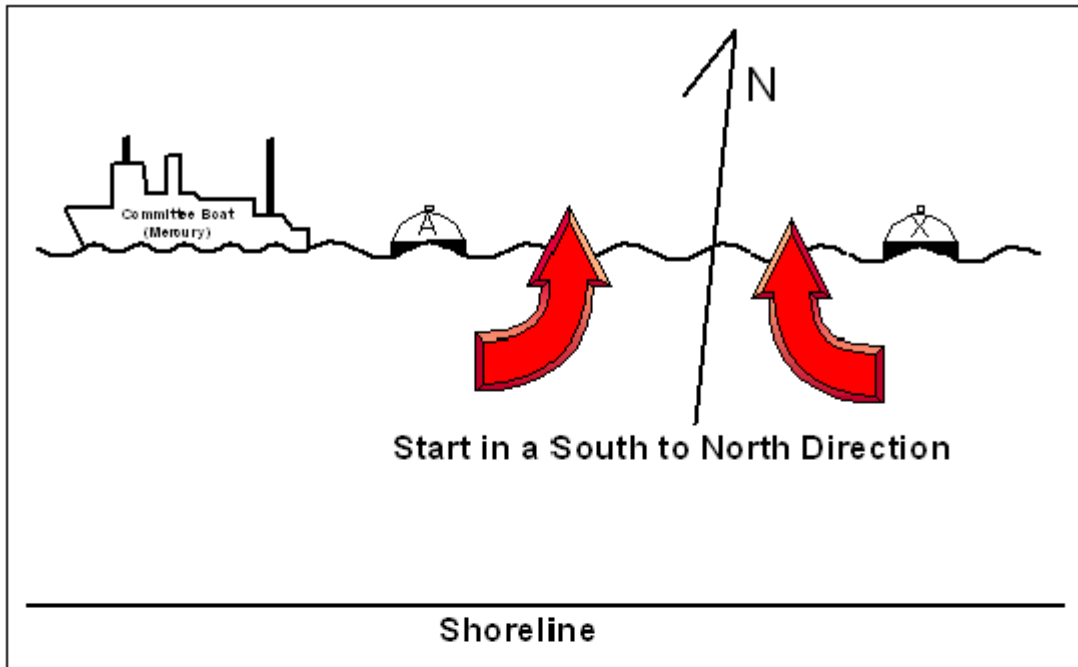


CHART NOT TO BE USED FOR NAVIGATION
COURSE MAKER LOCATIONS ARE APPROXIMATE

ATTACHMENT 2

**Master Mariners Regatta Sailing
Instructions**

Start & Finish Area Illustrated



ATTACHMENT 3

**Master Mariners Regatta Sailing
Instructions**

Class Descriptions

BS – Big Schooner

M1 – Marconi rigged vessels 40 feet on deck and over

M2 – Marconi rigged vessels 35 feet to less than 40 feet on deck

M3 – Marconi rigged vessels 30 feet to less than 35 feet on deck

M4 – Marconi rigged vessels less than 30 feet on deck

G1 – Gaff Rigged vessels 40 feet on deck and over

G2 – Gaff Rigged vessels 30 feet to less than 40 feet on deck

G3 – Gaff Rigged vessels less than 30 feet on deck

OCEAN 2 (O-2) – Yachts over 30 feet to less than 40 feet on deck with NC PHRF Ratings that choose to compete in this class

OCEAN 1 (O-1) - Yachts over 40 feet on deck with NC PHRF Ratings that choose to compete in this class

FARALLON CLIPPER – One Design Class racing in the OCEAN 2 class

BIRD – One Design Class

BEAR – One Design Class

L-36 – One Design Class; The L-36 Division will be non-spinnaker.

Attachment 4
Class Assignments and Start Times

Start Time	Vessel	Owner	Division	Rig	Sail #
12:00	Bongo	Jill Lutz	Bear	Sloop	64
12:00	Camembert	Todd Greenberg	Bear	Sloop	57
12:00	Chance	Anselm Wettersen	Bear	Sloop	47
12:00	Huck Finn	Margie Siegal	Bear	Sloop	17
12:00	Kodiak	Peter L. Miller	Bear	Sloop	68
12:00	Magic	Tim Maloney	Bear	Sloop	65
12:00	Panda	Daniel Maloney	Bear	Sloop	9
12:00	Puff	David Sandry	Bear	Sloop	59
12:00	Alma	Natl. Park Service - Al Lutz	BS	Schooner	ALMA
12:05	Briar Rose	John T. Ough	G2	Ketch	G3
12:05	Sequestor	Hans List	G2	Ketch	G 31
12:05	Taihoa	Joseph (Jody) Boyle	G2	Ketch	G 94
12:05	Black Jack	Ted Hoppe	M4	Sloop	8
12:10	Aida	Patty & Skip Henderson	G1	Gaff Schooner	G90
12:10	Regulus	Ed & Linda Witt	G2	Schooner	G4
12:10	Sea Quest	Stephen Carlson	G2	Ketch	G
12:10	Little Packet	Dick & Barbara Wrenn	M3	Sloop	A1
12:10	Vectis	Louis & Sara Nickles	M3	Sloop	715
12:15	Tehani	Paul Gaetani	M2	Cutter	M 77
12:15	Adagio	David Howell	M3	Sloop	28263
12:15	Vixen	Steve & Linda Kibler	M3	Yawl	44
12:15	Corsair	Elise Brewster	M4	Sloop	L395
12:15	Glory	Jerry de Rham	M4	Ketch	73
12:20	Makani Kai	Ken & Kristine Inouye	G2	Ketch	G 77
12:20	Polaris	Spaulding Wooden Boat Center	G2	Gaff Sloop	G11
12:20	Nomad	Richard & Sharon Ruddick	M2	Sloop	134
12:20	Unda	Dean Gurke	M2	Ketch	3848
12:20	Santana	Richard Haines	M3	Sloop	W7
12:20	Morning Star	Barbara Ohler	M4	Sloop	510
12:25	Corsair	SF Sailing Whaleboat Assoc	M3	Ketch	22
12:25	Pegasus	Spaulding Wooden Boat Center	M3	Sloop	SP1
12:25	EOS	K.Dunlop & S.Mavromihalis	M4	Sloop	23
12:25	Flirt	Peter Strietmann	M4	Sloop	M14
12:30	Andrew Mulligan	Stephen Canright	G3	Gaff	120
12:30	Spray	Brian & Jesi Mifsud	G3	Gaff	G9
12:30	Gold Star	Jim Cullen	M1	Schooner	2001
12:30	Nautigal	C. Jeff & Karen Stokes	M2	Sloop	F660
12:30	Viking-Red	SF Sailing Whaleboat Assoc	M3	Cutter	120
12:35	Brigadoon	Terry & Patti Klaus	G1	Tops'l Schooner	888
12:35	Yankee	The Yankee LLC	G1	Schooner	K103
12:35	Stardust	Mary Moseley	G3	Schooner	G32
12:35	Ingwe	Jay Gardner	M2	Ketch	223
12:35	Kaeresta	Roger & Carmen Rapp	M4	Sloop	D926

Attachment 4
Class Assignments and Start Times

Start Time	Vessel	Owner	Division	Rig	Sail #
12:40	Kathleen	Lila Scott	G3	Cutter	G 45
12:40	Chrysopyle	Kirk Morrison	M1	Sloop	150
12:40	Inismore	Danny McGinley	M1	Sloop	2
12:40	Sunda	Robert & Colleen Rogers	M2	Sloop	17024
12:40	Pegasus	Peter Hayes	M1	Ketch	100
12:45	Eventide	Greg Milano	L36	Sloop	31
12:45	Leda II	David James	L36	Sloop	71
12:45	OlÈ	J Hamilton & C Leonard	L36	Sloop	7
12:45	Papoose	Allen Edwards	L36	Sloop	5
12:45	Bolero	Tim Murison	M1	Sloop	IC-10
12:50	Curlew	James W. Josephs	Bird	Sloop	2
12:50	Robin	Patrick & Cissy Kirrane	Bird	Sloop	18
12:50	Widgeon	David A. Cobb	Bird	Sloop	19
12:50	Seaward	Call of the Sea - Ken Neal	BS	Schooner	4
12:50	Bright Star	Ted & Laddie Hall	M1	Cutter	M139
12:50	Elizabeth Muir	Peter Haywood & Ivan Poutiatine	M1	Schooner	1991
12:55	Santana	Paul & Christine Kaplan	M1	Schooner	X9
12:55	Chorus	Brad Asztaios	O-2	Sloop	8199
12:55	Credit	Janice & Bill Belmont	O-2	Sloop	8708
12:55	Echo	Jack Coulter	O-2	Sloop	FC12
12:55	Mistress II	Jim Patt	O-2	Sloop	11
12:55	Ouessant	Gene & Pat Buck	O-2	Sloop	8214
13:00	Lynx	Lynx Educational Foundation	BS	Tops'l Schooner	LYNX
13:00	Bounty	Dan & Sue Spradling	O-1	Yawl	28170
13:00	Kate II	Roger Emerick	O-1	Sloop	1946
13:00	Valiant	Jeff McNish	O-1	Sloop	45